



Noise Compatibility Report

2025 Quarter 1

January – February - March

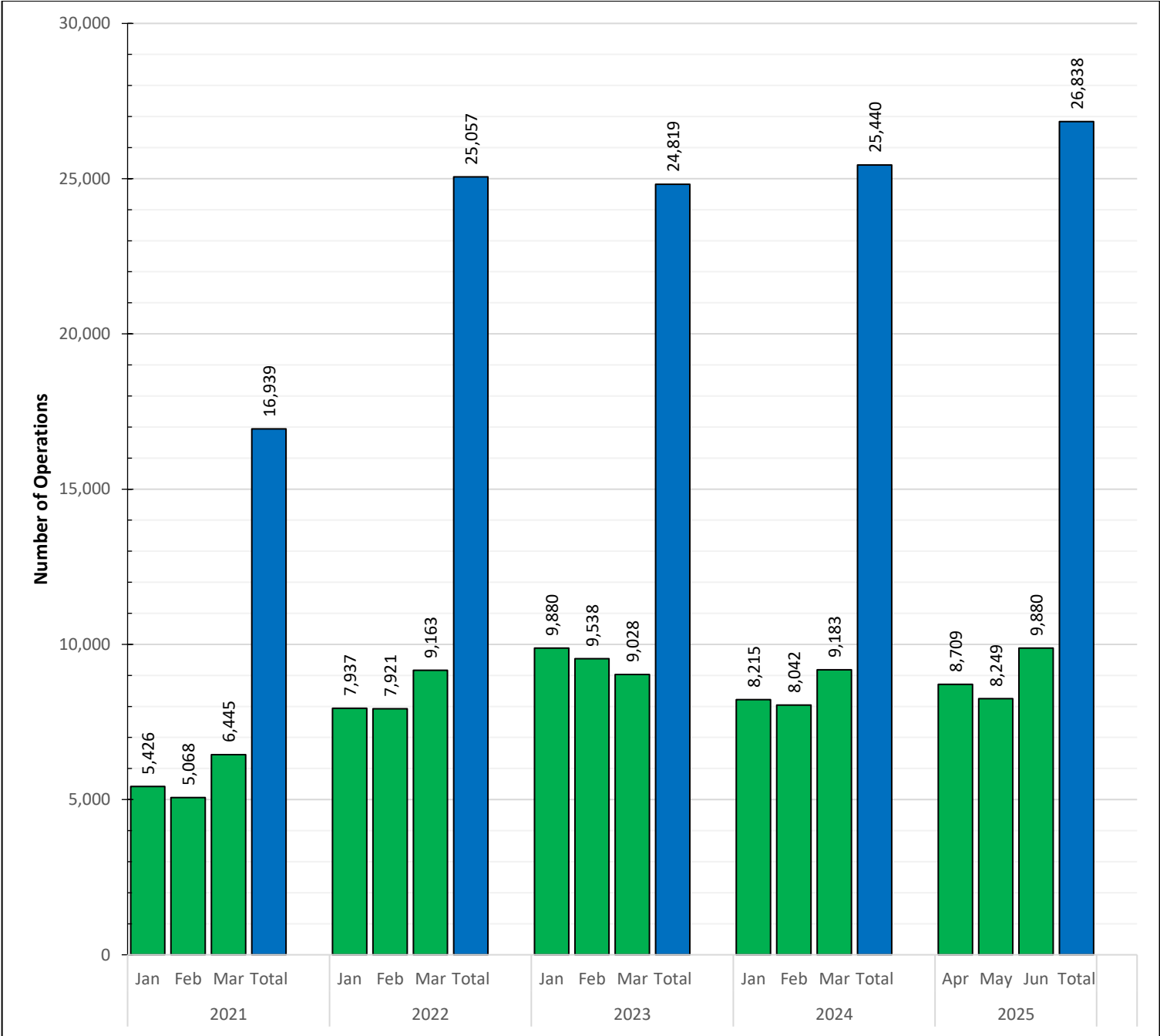
Disclaimer

- The Noise Compatibility Plan (NCP) at Cleveland Hopkins International Airport (CLE) combines the existing approved Part 150 Noise Compatibility Plan with Air Traffic Control Tower (ATCT) requirements to ensure the safe and expeditious handling of air traffic. While safety is paramount to any aircraft operation, noise sensitivity to the surrounding communities is also of key importance in airport operations.
- CLE is not directly responsible for changes made to flight plans or routes of aircraft.
- Adherence to approved noise abatement measures is voluntary and subject to change based on weather, efficiency, and safety.
- The contents of this report are for informational purposes only. The information cannot be used for enforcement of any Noise Abatement Measure.
- Due to the large volume of data when reporting noise, not all noise and flight information can be shown in this report.
- If more information is needed, please contact the airport and we will respond as soon as possible.

Aircraft Operations

Cleveland 1st Quarter Operations 2021 – 2025

- There were **26,838** operations in the 1st Qtr. 2025; This is a 5% increase over 1st Qtr. 2024.

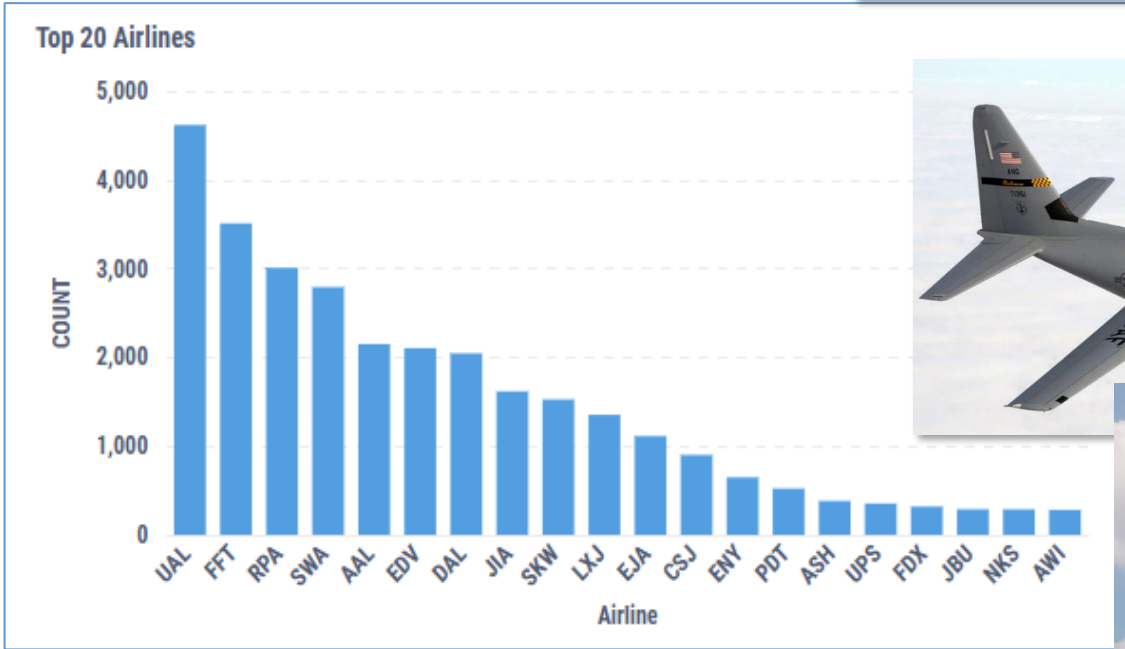
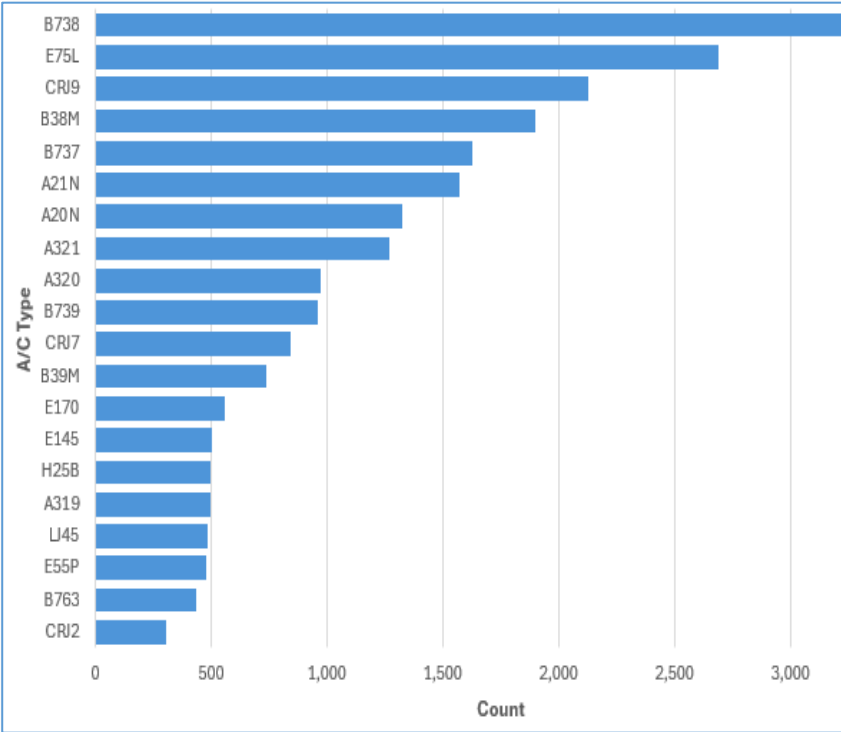


Source: FAA Operations Network (OPSNET) - <https://aspm.faa.gov/opsnet/sys/Main.asp?force=atads>
The Operations Network (OPSNET) is the official source of FAA air traffic operations and delay data.



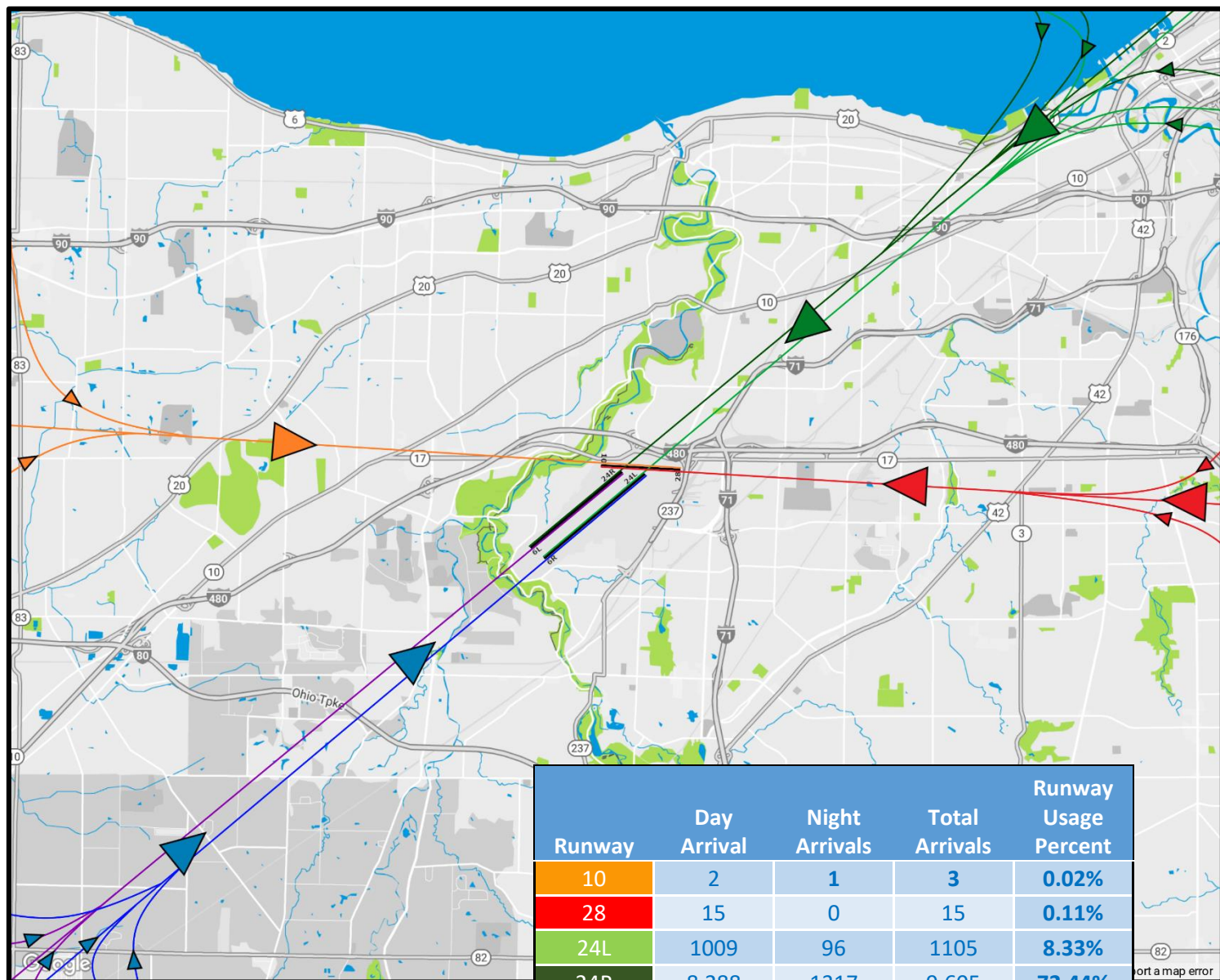
Fleet Mix

Cleveland Hopkins had 26,838 operations in Quarter 1 of 2025. Here are some of the notable aircraft and airlines that CLE welcomes and sends off on a regular basis.



Source: PASSUR Symphony EnvironmentalVue

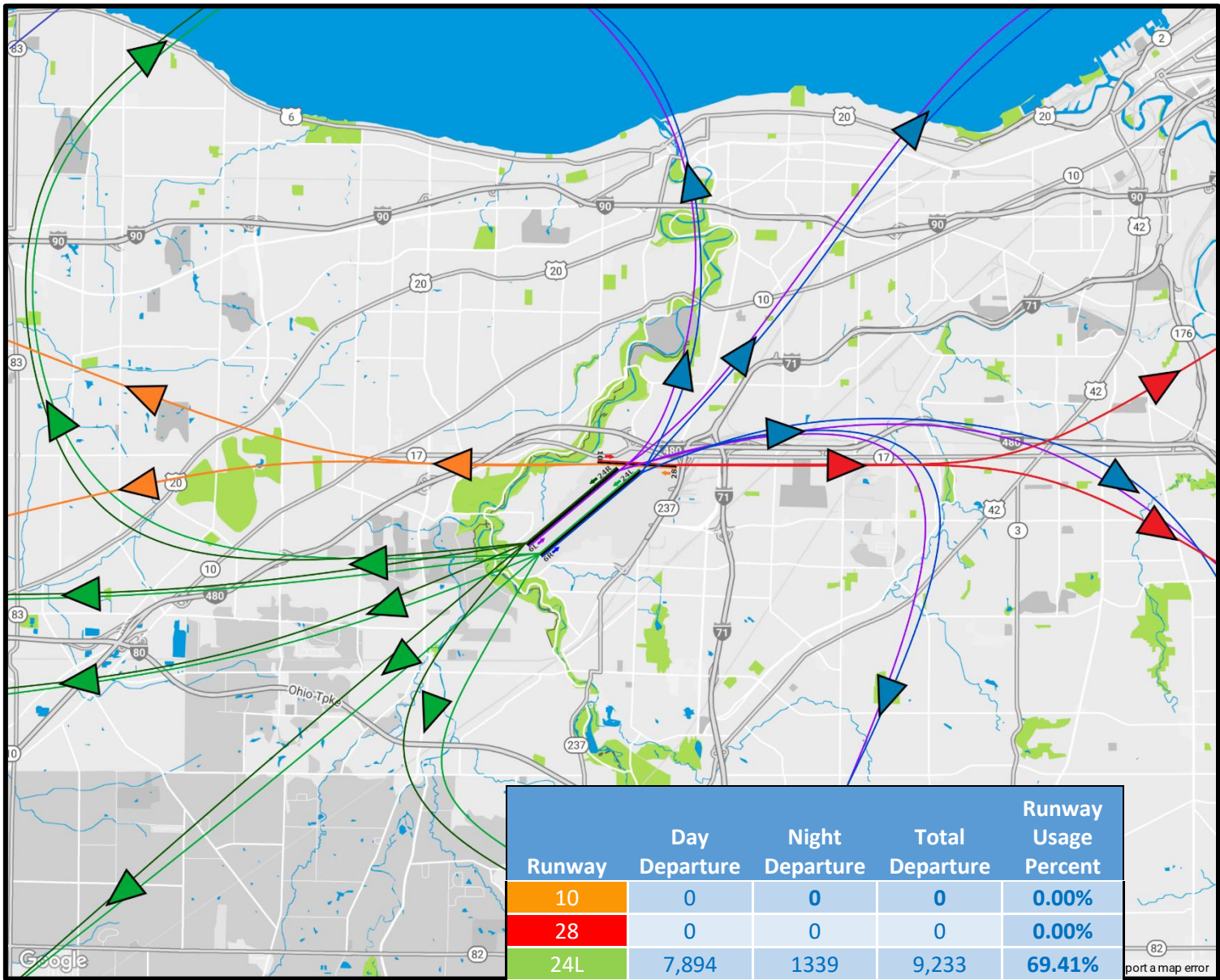
Runway Use: 1st Quarter, 2025 Arrivals



Runway	Day Arrival	Night Arrivals	Total Arrivals	Runway Usage Percent
10	2	1	3	0.02%
28	15	0	15	0.11%
24L	1009	96	1105	8.33%
24R	8,288	1317	9,605	72.44%
6L	1,887	305	2,192	16.53%
6R	193	12	205	1.55%
UNK	64	71	135	1.02%
Totals	11458	1802	13260	100.00%

Note: Runway usage totals may not match FAA operation totals due to different system tracking methods and potential duplicate data. Data is generated using PASSUR Symphony EnvironmentalVue.

Runway Use: 1st Quarter, 2025 Departures

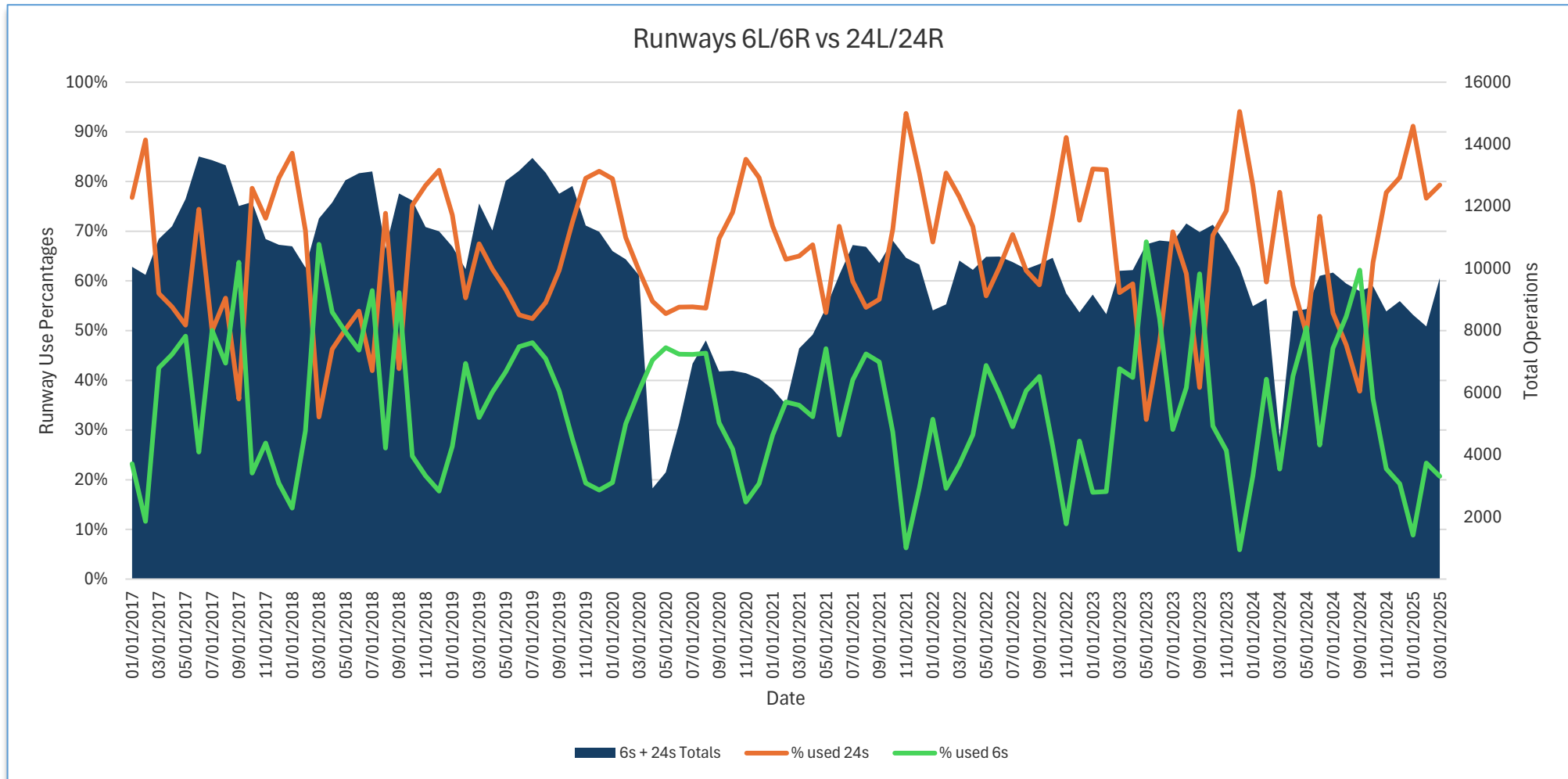


Note: Runway usage totals may not match FAA operation totals due to different system tracking methods and potential duplicate data. Data is generated using PASSUR Symphony EnvironmentalVue.

Primary Air Traffic Flow 6L/6R vs 24L/24R

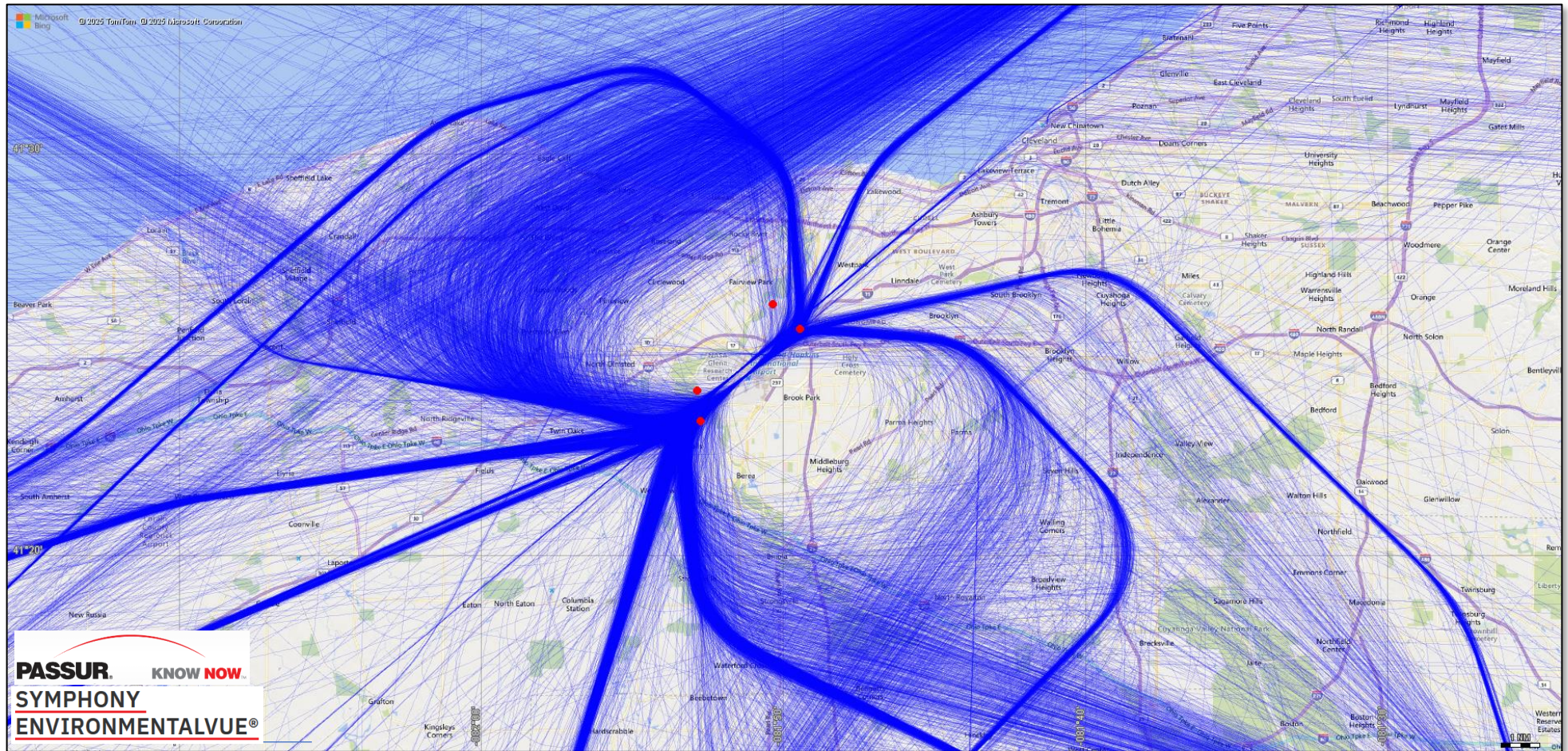
In general, CLE mostly operates in a southerly flow throughout the year (24R/24L). The reason for this almost always has to do with the prevailing wind direction. Aircraft operate most efficiently and safely when taking off and landing into the wind. Generally, winds move across the United States from west to east. Runways 24L and 24R are aligned southwest, thus making them the most used runway configuration for arrivals and departures.

On average, Runways 24L & 24R are used 65% of the time. Runways 6L & 6R are used 35% of the time. Runway 10-28 (not included on this graph) is CLE's crosswind runway and is used in less than 1% of all operations.



Departure Headings, 1st Quarter: Daytime

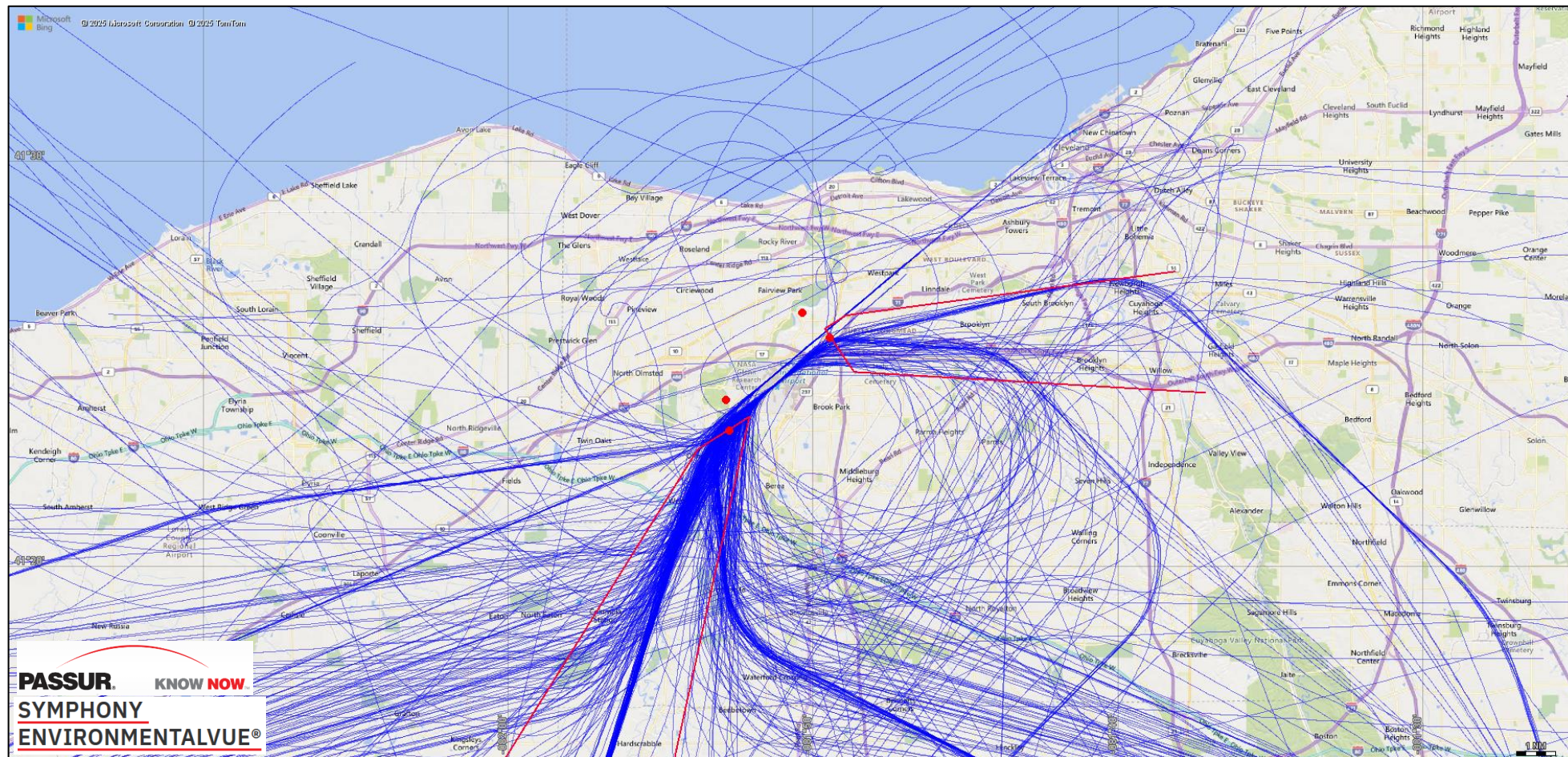
2025 1st Quarter Day-time departure – 12,396 flight tracks (jet propulsion only). Daytime is from 06:00 am to 11:00 pm.



Departure Headings, 1st Quarter: Night-time

2025 1st Quarter nighttime departure flight tracks (all propulsion types). Night-time is from 11:00 pm to 06:00 am.

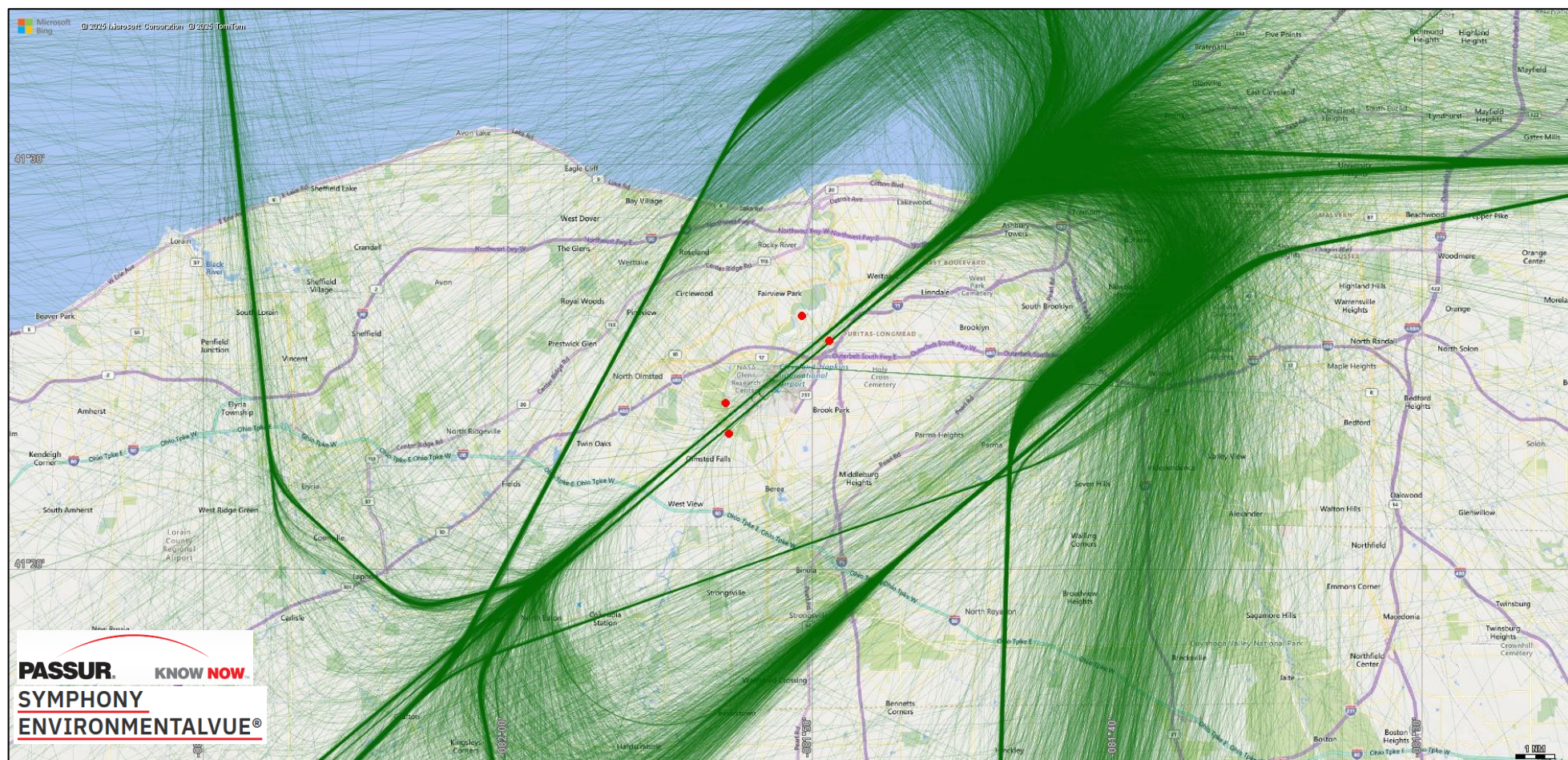
Of **483** departure flights, **157 (33%)** were outside their respective late night departure corridors. These corridors represent the airspace through which aircraft depart. These corridors are not mandatory, but they are strongly recommended to pilots. As such, there are no penalties for not departing in these corridors. Weather, wind direction, and other factors play into whether the late-night corridors are followed.



Key: Flight Tracks ———
Noise Monitoring Station ●

Daytime and Nighttime Arrival Headings, 1st Quarter

Daytime and nighttime arrivals for all of Quarter 1 are shown here (all propulsion types). Note that a voluntary measure or the Noise Compatibility Program calls for all aircraft arriving between 11:00 pm and 6:00 am, wind and weather permitting, to intercept final approach course no closer than four miles before touchdown.



Key: Flight Tracks —
Noise Monitoring Station ●

Metroplex: South Flow (Departures)

What is the Cleveland/Detroit Metroplex?

- Starting in mid-September 2018, the Federal Aviation Administration (FAA) made airspace changes in and around Cleveland and Detroit airports. These changes are part of the Cleveland-Detroit Metroplex project, which will bring updated satellite procedures to improve traffic flow.
- In most cases, aircraft will follow the same tracks that they do today. The difference is that aircraft will be using modernized procedures that replace dozens of decades-old conventional air traffic control procedures. In all, the Cleveland/Detroit Metroplex project includes 71 new satellite-based procedures. This project is a key component of the FAA's Next Generation Air Transportation System (NextGen) and a nationwide effort to build the foundation for future safety and efficiency improvements.

Source: <https://www.clevelandairport.com/faa-makes-airspace-changes-clevelanddetroit-metroplex-project>

South flow departures take off from runway 24L and runway 24R.



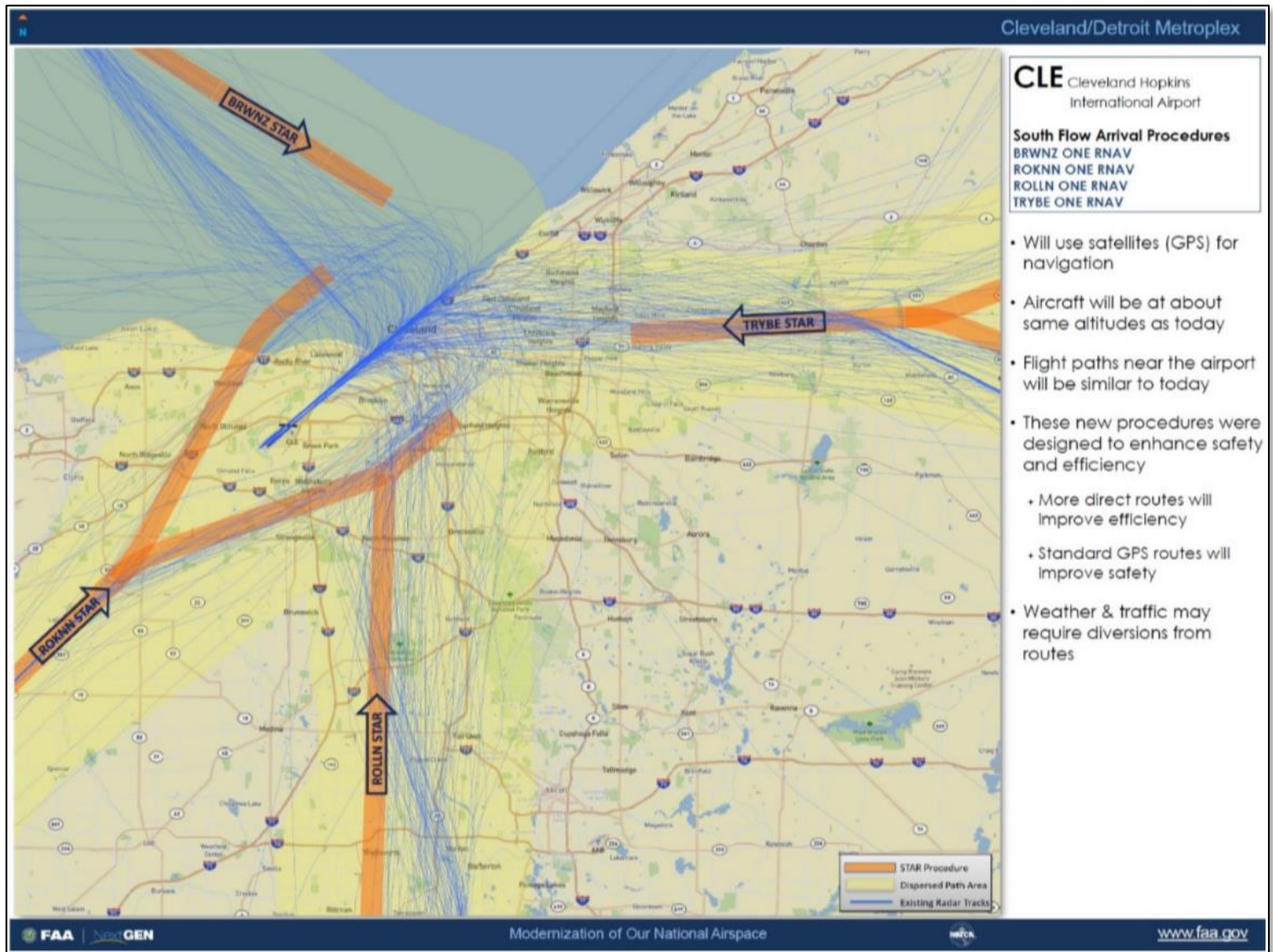
Note: Flight tracks are historic and do not represent the current quarter.

Source: www.metroplexenvironmental.com

Cleveland Hopkins International Airport
clevelandairport.com/contact

Metroplex: South Flow (Arrivals)

South flow arrivals land on runway 24L and runway 24R.

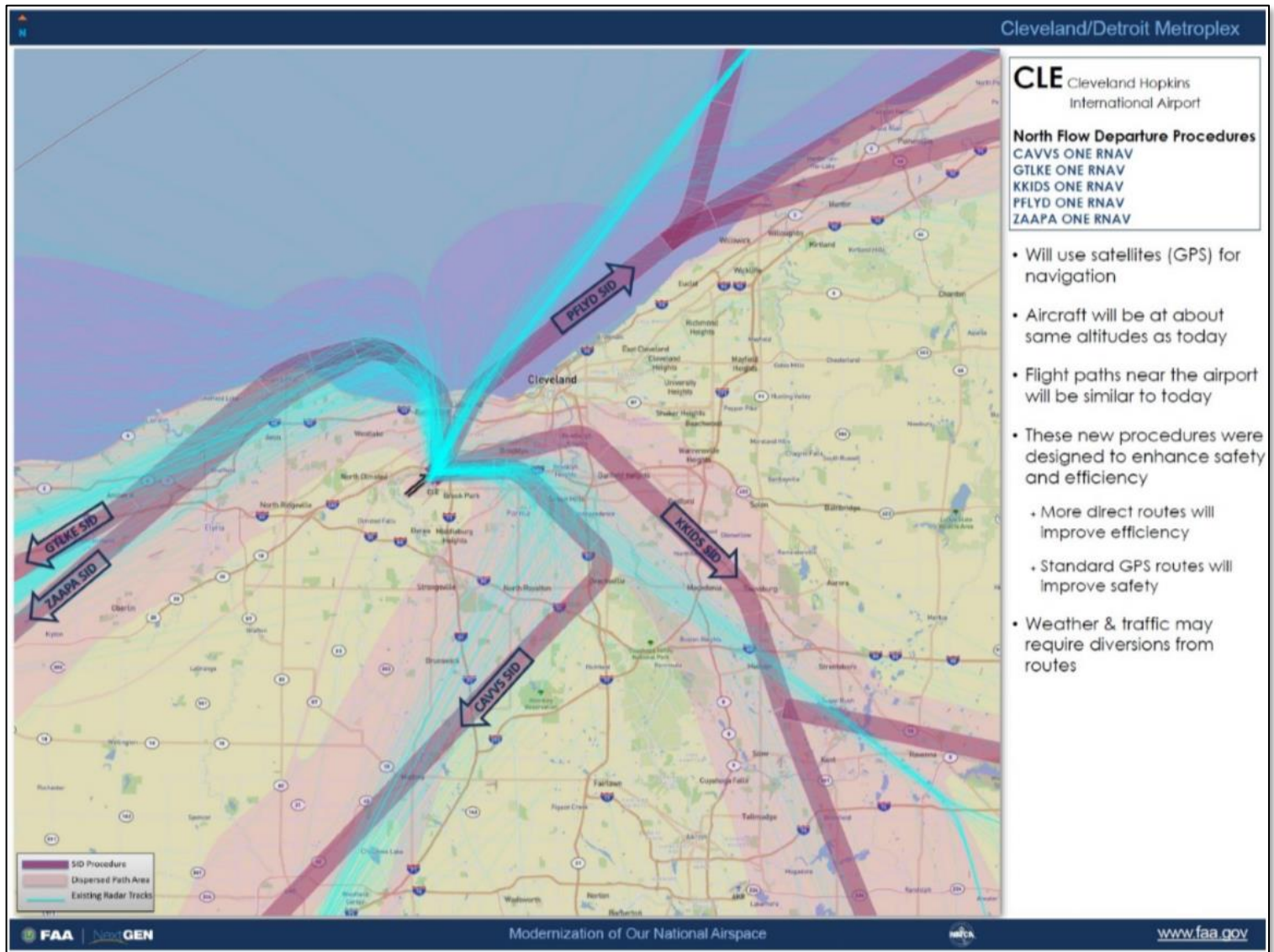


Note: Flight tracks are historic and do not represent the current quarter.

Source: www.metroplexenvironmental.com

Metroplex: North Flow (Departures)

North flow departures take off from runway 6L and runway 6R.

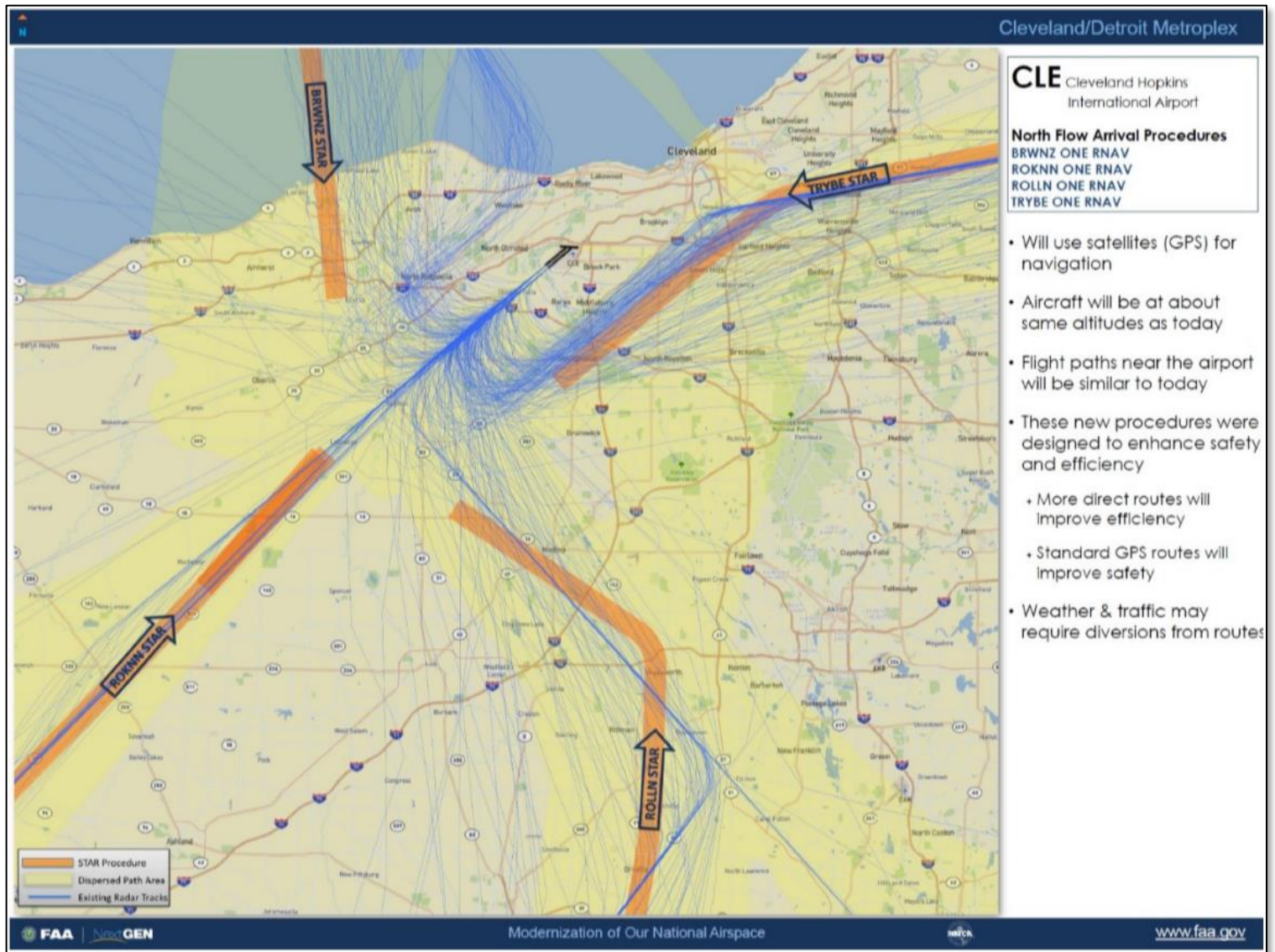


Note: Flight tracks are historic and do not represent the current quarter.

Source: www.metroplexenvironmental.com

Metroplex: North Flow (Arrivals)

North flow arrivals land on runway 6L and runway 6R.



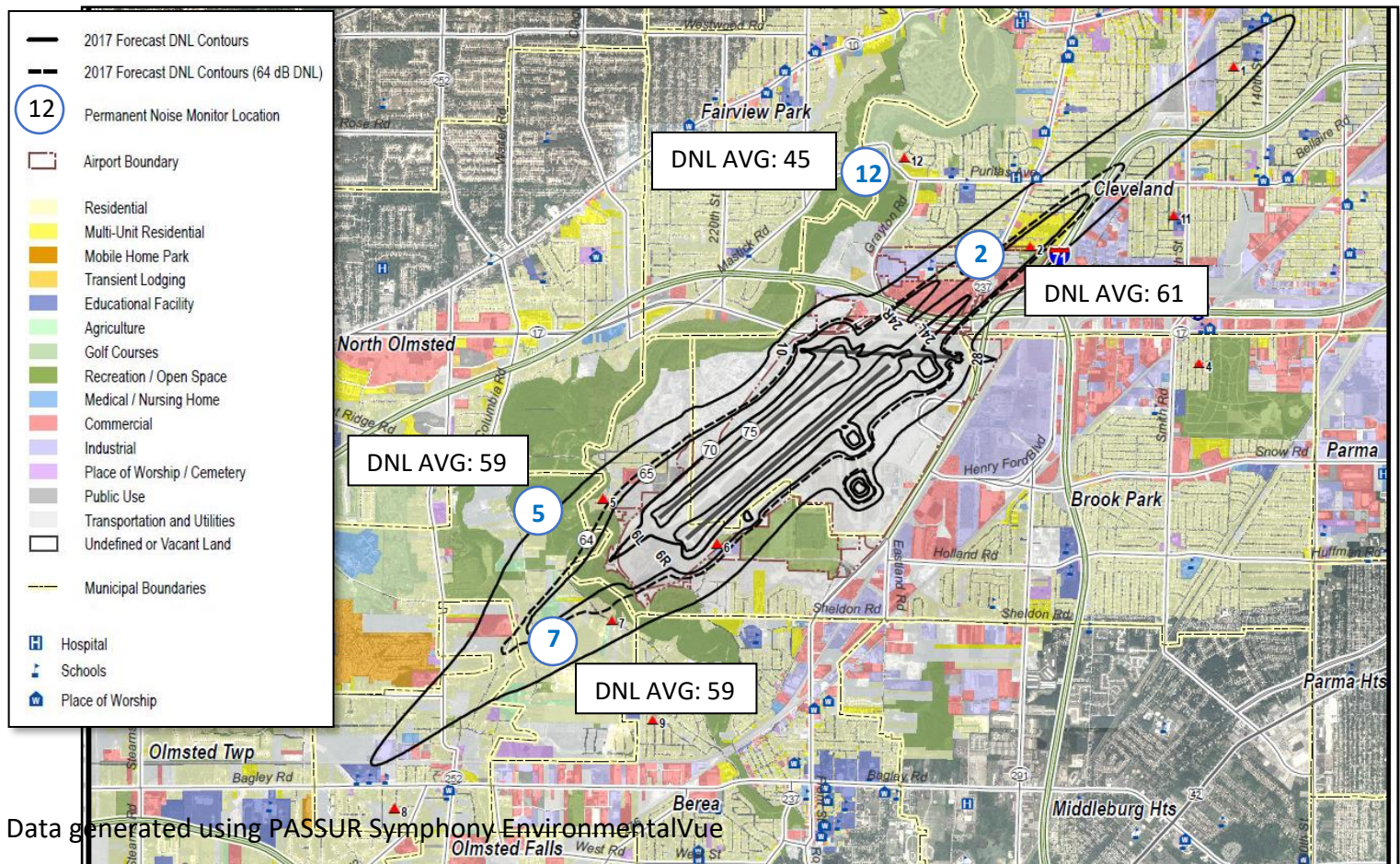
Note: Flight tracks are historic and do not represent the current quarter.

Source: www.metroplexenvironmental.com

Aircraft Noise: Q1 Average DNL by Noise Monitoring Station (NMS)

What is DNL?

- As FAA's primary metric for aviation noise analysis, the FAA has determined that the cumulative noise energy exposure of individuals to noise resulting from aviation activities must be established in terms of the day-night average sound level (DNL) in decibels (dB). The 65 DNL is the Federal significance threshold for aircraft noise exposure.
- If interested in the Fundamentals of Noise and Sound, please visit:
https://www.faa.gov/regulations_policies/policy_guidance/noise/basics/



Interesting Fact: The map above shows the variety of land uses around Cleveland Hopkins. CLE has grown with the communities around it and there are many residential neighborhoods in every direction from the airport. Due to the land-locked nature of the airport, it is impossible for aircraft to avoid operating over these residential areas.

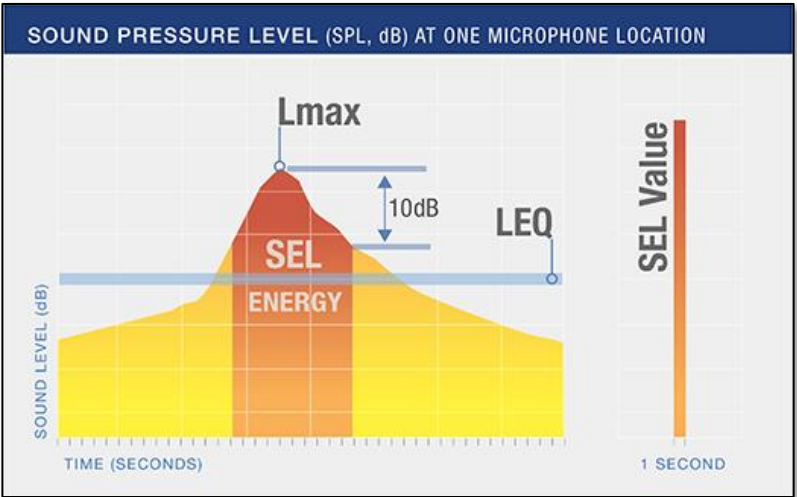
Top Three Lmax at Each NMS

Lmax is the single loudest point during a noise event.

Sounds Exposure Level (SEL) is a measure that takes into account all noises over the entire duration of the noise event.

Decibel (db) is the unit used to measure the intensity of a sound. The human ear hears sound pressures over a wide range. Decibels, which are measured on a *logarithmic* scale, correspond to the way our ears interpret sound pressures.

NMS – Noise Monitoring Station: For a map of these stations, refer to the previous pages.

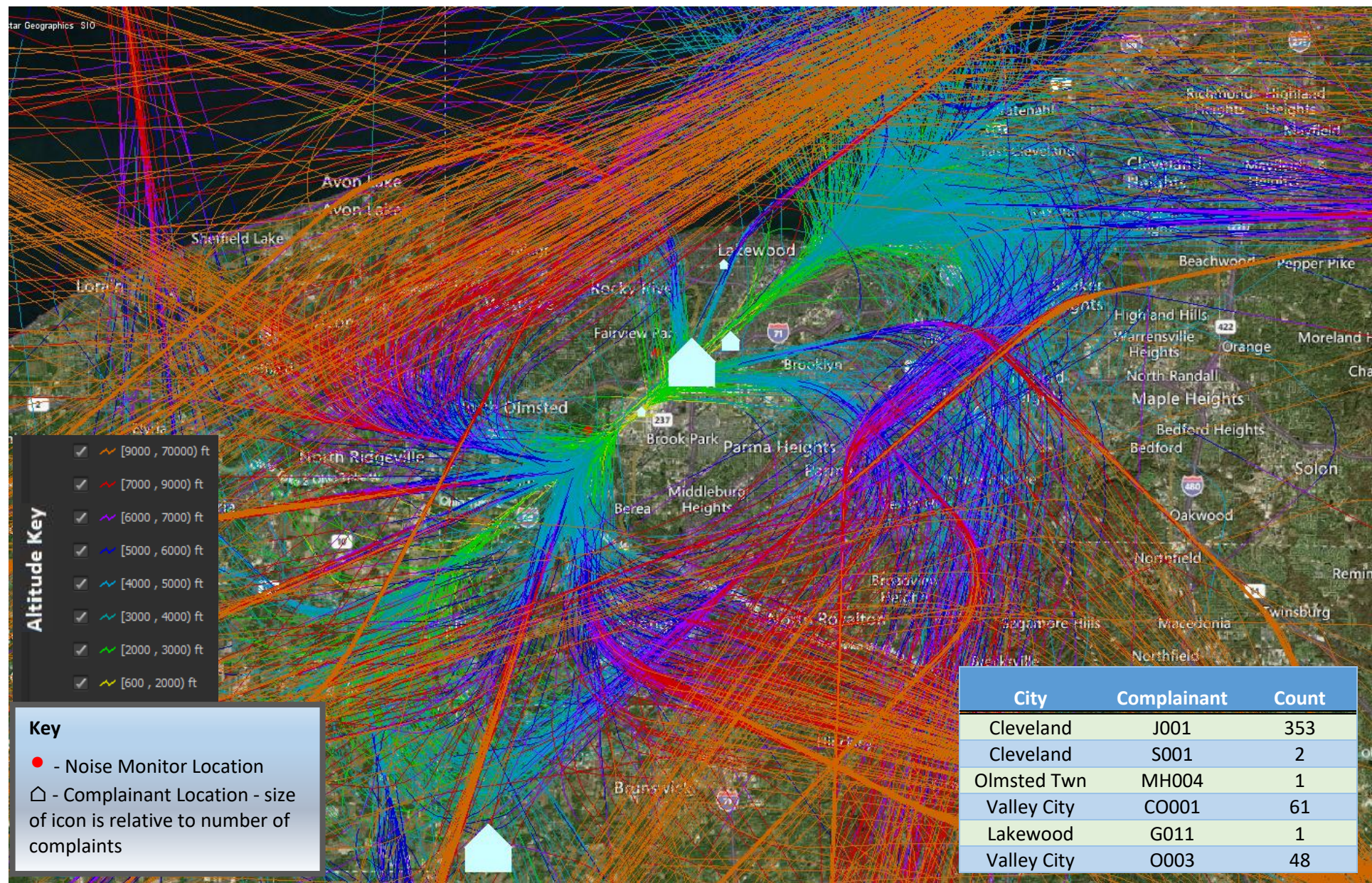


Source: www.faa.gov

Date and Time	NMS	Lmax (dB)	Sound Exposure Level (dB)	Duration (sec)	Operation	Aircraft
3/23/2025 18:41	NMS02	94.2	99.8	17	Arrival 24L	Boeing B767-300
2/16/2025 20:11	NMS02	93.5	99.32	14	Arrival 24L	Boeing B737-800
3/28/2025 16:00	NMS02	92.1	96.58	17	Arrival 24L	Boeing B737-900
1/24/2025 15:26	NMS05	95.5	100.16	29	Departure 24R	Bombardier CRJ-900
1/24/2025 15:41	NMS05	94.8	98.5	14	Departure 24R	Airbus A320neo
2/3/2025 12:25	NMS05	94.2	100.57	20	Arrival 24L	Boeing B737-800
2/28/2025 19:48	NMS07	93.1	97.77	24	Departure 24L	Bombardier CRJ-900
3/19/2025 22:30	NMS07	90	96.83	21	Departure 24L	Boeing B747-400
1/18/2025 14:12	NMS07	89	95.7	22	Departure 24L	Boeing B737-800
2/17/2025 17:24	NMS12	83.5	87.3	11	Arrival 24R	Boeing B737
2/17/2025 9:44	NMS12	83.2	87.8	14	Arrival 24R	Bombardier CRJ-900
3/17/2025 14:14	NMS12	83	91.64	13	Departure 6R	Boeing B737-800

Data generated using PASSUR Symphony EnvironmentalVue

Noise Complainant Map – Q1 2025



Do you have a question or noise complaint?

Please visit the [Symphony PublicVue](https://www.clevelandairport.com/contact) to submit a noise complaint. This site can also be found by going to <https://www.clevelandairport.com/contact> and click on “Learn More” under Noise Complaints. Please be patient while we take time to process your message and respond with the appropriate information.

